

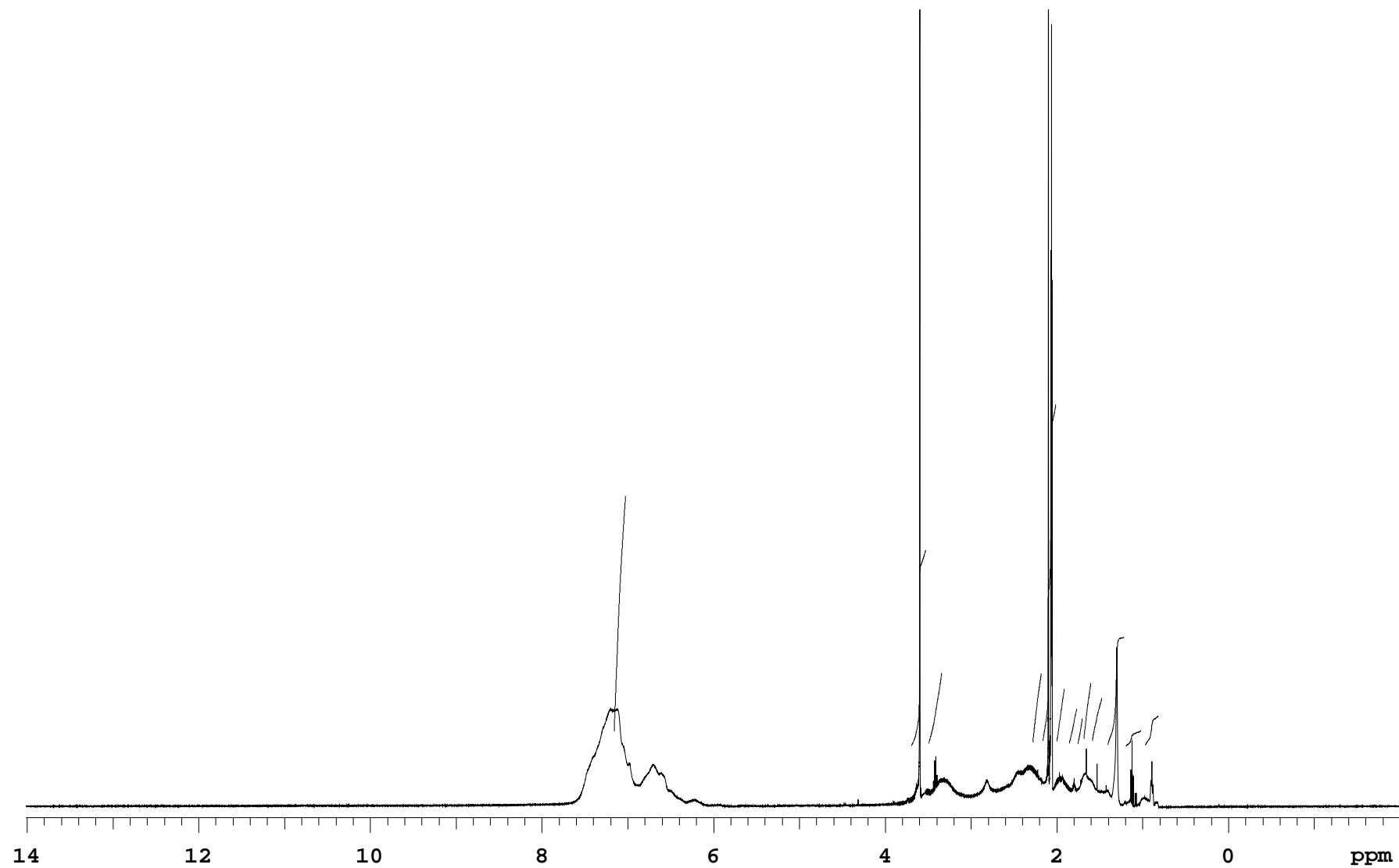
reverse\_SMAh

Sample Name **reverse\_SMAh**  
Date collected **2019-11-15**

Pulse sequence **PROTON**  
Solvent **acetone**

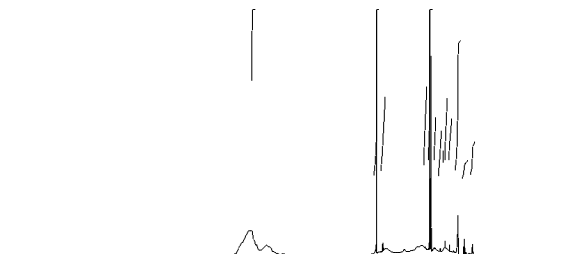
Temperature **25**  
Spectrometer **chpc-nmr500a-vnmrs500**

Study owner **gmn26**  
Operator **gmn26**



## reverse\_SMAh

Sample Name	reverse_SMAh	Pulse sequence	PROTON	Temperature	25	Study owner	gmn26
Date collected	2019-11-15	Solvent	acetone	Spectrometer	chpc-nmr500a-vnmrs500	Operator	gmn26



## INTEGRAL VALUES

Integral	start(ppm)	end	value
1	7.1641	7.01789	18.914
2	3.70086	3.51943	14.685
3	3.50134	3.33556	5.593
4	2.28319	2.17267	5.672
5	2.17218	2.00787	25.360
6	2.00787	1.9086	4.332
7	1.86116	1.76189	2.883
8	1.7614	1.69489	2.381
9	1.69489	1.59562	4.956
10	1.59513	1.46897	3.697
11	1.40931	1.21565	8.075
12	1.20343	1.01271	1.244
13	0.976035	0.812702	2.209

## SAMPLE

date Nov 15 2019  
solvent acetone  
file /home/bath/vnmrsys  
/data/gmn26/reverse\_SMAh  
h\_20191115\_01/PROTON\_01.  
fid

## PRESATURATION

satmode n  
wet n

## SPECIAL

temp 25.0  
gain 30  
spin 0  
hst 0.008  
pw90 7.800  
alfa 10.000

## ACQUISITION

sw 8012.8  
at 2.045  
np 32768  
fb 4000  
bs 32  
d1 1.000  
nt 8  
ct 8

## FLAGS

il n  
in n  
dp y  
hs nn

## TRANSMITTER

tn H1  
sfrq 500.062  
tof 500.0  
tpwr 60  
pw 3.900

## PROCESSING

fn 65536

## DISPLAY

sp -1005.8  
wp 8012.6  
rfi 1006.1  
rfp 0  
rp -53.5  
lp 0

## DECOUPLER

dn 0  
dof nnn  
dm W40\_OneNMR  
decwave 38  
dpwr 32258  
dmf

## PLOT

wc 234  
sc 8  
vs 245  
th 12  
ai cdc ph

Plotname: PROTON\_01\_plot01

Data file /home/bath/vnmrsys/data/gmn26/reverse\_SMAh\_20191115\_01/PROTON\_01.fid

Plot date 2019-11-15